



CRANE SPECIFICATION

2.5T UNIC SPIDER CRANE UR256CA

COMPREHENSIVE LIFTING SOLUTIONS

We look forward to providing a full heavy lift engineering and crane solution for your next project. Our heavy lift engineers and on site personnel are experienced in managing and organising highly de-manding lift requirements.

Contact us to discuss your lifting requirements and a free quote.

BRISBANE (HQ)

07 3907 5800
37 Paringa Rd, Murarrie, QLD, 4172

ROMA

07 4622 5522
8 Wormwell Drive, Roma QLD 4455

GOLD COAST

07 5593 4688
9 Kimberley Rd, Burleigh Heads, QLD, 4220

SUNSHINE COAST

0409 595 618
562 Maroochydore Rd, Kunda Park, QLD, 4556

GLADSTONE

07 4972 9326
7 Red Cover Rd, Gladstone, QLD, 4680

TOWNSVILLE

07 4779 4088
16 Mackley St, Garbutt QLD 4814

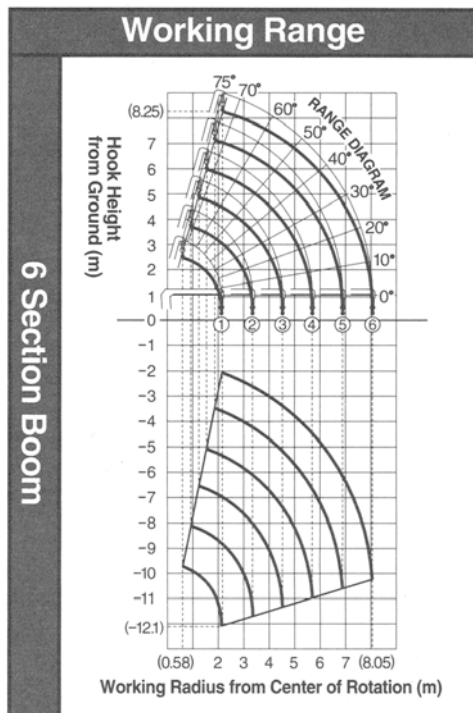
ROCKHAMPTON

07 4939 1095
371 Leichhardt St, Rockhampton QLD, 4700

MACKAY

07 4952 6998
135 Diesel Drive, Paget QLD 4740



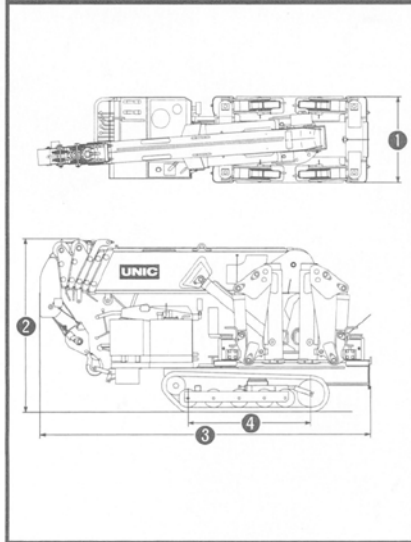


UR-256CA/UR-256CAM RATED LOADS(kg)								
ALL BOOMS RETRACTED and SECOND STAGE EXTENDED								
WORKING RADIUS (meter)		~1.0	1.5	1.8	2.0	2.5	3.0	3.325
Outrigger	Extended	2,525		2,125	1,925	1,525	1,025	815
	Mid-Extended	2,525		1,675	1,275	825	545	425
	Retracted	2,525	1,225	845	725	455	315	255
THIRD STAGE EXTENDED								
WORKING RADIUS (meter)		~1.5	2.0	2.9	3.0	3.5	4.0	4.52
Outrigger	Extended	1,225		1,195	1,085	715	515	385
	Mid-Extended	1,225		605	545	375	255	195
	Retracted	1,225	725	355	315	225	175	135
FOURTH STAGE EXTENDED								
WORKING RADIUS (meter)		~2.5	3.0	3.6	4.0	4.5	5.0	5.695
Outrigger	Extended	725		715	525	425	335	255
	Mid-Extended	725	545	355	255	195	165	125
	Retracted	455	315	215	175	135	115	85
FIFTH STAGE EXTENDED								
WORKING RADIUS (meter)		~3.0	3.5	4.0	4.5	5.0	5.5	6.0
Outrigger	Extended	435			375	325	285	245
	Mid-Extended	435	375	255	195	165	135	115
	Retracted	315	225	175	135	115	95	—
SIXTH STAGE EXTENDED								
WORKING RADIUS (meter)		~4.0	4.5	5.0	5.5	6.0	6.5	7.0
Outrigger	Extended	275			255	235	215	185
	Mid-Extended	255	195	165	135	115	105	85
	Retracted	175	135	115	95	—		

UR-250CA SERIES SPECIFICATIONS TABLE

Crane Model	UR-256CA·UR-256CAM	UR-255CA·UR-255CAM	UR-254CA·UR-254CAM
Capacity	2,525kg at 1.5m	2,525kg at 1.5m	2,525kg at 1.6m
Working Radius	0.58m to 8.05m	0.54m to 6.76m	0.54m to 5.63m
Hook Height above ground level (Approx)	Max.8.25m	Max.7.0m	Max.5.9m
Hook Height below ground level (Approx)	Max.12.1m	Max.9.4m	Max.9.5m
Boom length	Min.2.30 m to Max. 8.23m	Min. 2.15m to Max. 6.94m	Min.2.03m to Max. 5.81m
Boom Telescopic Speed	5.23m/33.0sec	4.79m/33.0sec	3.78m/28.0sec
Boom Section	6 Section	5 Section	4 Section
Wire Rope	Construction:6×WS(26) Diameter and Length:8.0mm×42.0m Breaking Strength:4,400kg	Construction:6×WS(26) Diameter and Length:8.0mm×34.0m Breaking Strength:4,400kg	Construction:6×WS(26) Diameter and Length:8.0mm×34.0m Breaking Strength:4,400kg
Boom Structure	6 Sided (Hexagonal) Box Beam with Angle Indicator and Anti-Two-Block Boom is Full Hydraulic Powered		
Boom Telescopic Cylinder	Double Acting type with Counterbalance Valve		
Boom Raising Angle/Speed	0° to 75°/23.0sec		
Boom Raising Cylinder	Double Acting type with Counterbalance Valve		
Winch	Oversized Drum for extra long cables and hoists. Winch Hook Designed to match the crane capacity. Can be used with Nylon Slings. Hydraulic Axial Plunger Type Motor, Spur Gear Reduction, with Automatic Brake.		
Winch Speed (Single Line)	16.8m/min at 4th Layer		
Hook speed	5.6m/min at 4th Layer 3 Part Line		
Hook Block	2,525kg Capacity with 1 Sheaves and Latch		
Swing (Slewing)	Hydraulic Motor Axial Plunger Type Driven, on a Ball Bearing Race. Worm and Spur Gear Reduction, Worm Self-Locking Holding Brake.		
Swing Rotation	360° Continuous Rotation (Right or Left) Non Stop		
Swing Speed	1.5 Revolutions/Minute		
Outriggers	Double Acting Hydraulic Cylinders with Pilot Operated Check Valves		
Oil Tank	15 Capacity		
Safety Devices	<ul style="list-style-type: none"> • Pressure Relief Valve for Hydraulic Circuit • Counterbalance Valves for Boom Raising and Boom Telescoping Cylinders • Pilot-operated Check Valves for Vertical Outrigger Cylinders • Boom Angle Indicator with Lofl Indicator • Automatic Mechanical Brake for Winch • Hook Safety Latch • Overwinding Alarm • Load Meter • Bypass Valve for Crane Circuit • Level 		

Top & Side Views



Measurements & Weight

Crane Model	UR-256CA/UR-256CAM	UR-255CA/UR-255CAM	UR-254CA/UR-254CAM
① Total Width	750mm	750mm	750mm
② Total Height	1,485mm	1,465mm	1,390mm
③ Total Length	2,860mm	2,670mm	2,570mm
④ Wheel-Base	1,060mm	1,060mm	1,060mm
Gross Weight	1,640kg	1,590kg	1,520kg

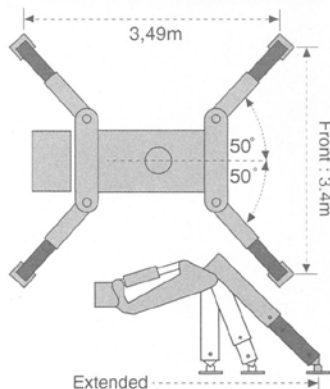
Crawling Gear

Engine (gasoline-powered)	Max.horsepower 7.5PS/2000rpm
Transmission	Front / 2 Section Rear / 2 Section
Maximum Speed	Forward 3.9km/h Reverse 3.2km/h
Ground Length	1,060 mm
Ground Pressure	UR-256CA:255CA:0.38kg/cm ² UR-254CA:0.36kg/cm ²
Steering	Side clutch
Parking-brake	Internal Expansion type
Hill Climbing Stability	20°

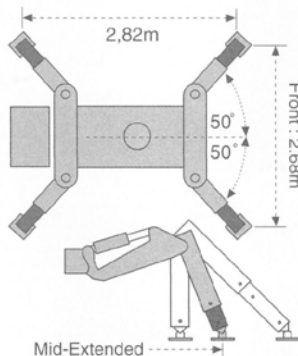
UR-250CAM series Power Unit Specifications

Electric Motor	Rated Power	3.7kw
	Voltage	200V(AC) Three Phases, Three Line
	AC-DC Converter	200V(AC)→12V(DC)
	Control Panel	ON & OFF Switch
Hydraulic Pump	Type	Gear Type
	Rated Pressure	165kg/cm ²
	Rated Delivery	14ℓ/min
	Rated Revolution	1,450rpm

Outrigger Extended



Outrigger Mid-Extended



Outrigger Retracted

