

ROUGH TERRAIN CRANE

TR-200M

JAPANESE SPECIFICATIONS

OUTLINE	SPEC. NO.
5-section Boom	TR-200M-4-00109

Control No. JA-01



TOTAL RATED LOADS

(1) With outriggers set (360°)
 (j) 4 section boom condition

Outriggers fully extended		Unit:ton			
		8.5m	14.4m	20.3m	26.2m
A	B (m)				
2.5	20.0	12.0	12.0	9.0	
3.0	20.0	12.0	12.0	9.0	
3.5	20.0	12.0	12.0	9.0	7.0
4.0	18.5	12.0	12.0	9.0	7.0
4.5	16.5	12.0	12.0	9.0	7.0
5.0	15.0	12.0	12.0	9.0	7.0
5.5	13.7	12.0	12.0	9.0	7.0
6.0	12.5	11.4	11.4	9.0	7.0
6.5	11.5	10.6	10.6	8.5	7.0
7.0		9.9	9.9	8.0	6.8
8.0		8.4	8.4	7.2	6.15
9.0		6.8	6.8	6.4	5.55
10.0		5.8	5.8	5.8	5.05
11.0		4.8	4.9	4.9	4.65
12.0		4.15	4.15	4.2	4.2
13.0				3.65	3.65
14.0				3.2	3.2
15.0				2.8	2.8
16.0				2.5	2.5
17.0				2.2	2.2
18.0				2.0	2.0
19.0					1.75
20.0					1.4
22.0					1.1
24.0					0.8

Outriggers middle extended		Unit:ton			
		8.5m	14.4m	20.3m	26.2m
A	B (m)				
2.5	20.0	12.0	12.0	9.0	
3.0	20.0	12.0	12.0	9.0	
3.5	20.0	12.0	12.0	9.0	7.0
4.0	18.5	12.0	12.0	9.0	7.0
4.5	16.5	12.0	12.0	9.0	7.0
5.0	14.5	12.0	12.0	9.0	7.0
5.5	12.0	12.0	12.0	9.0	7.0
6.0	10.1	10.3	10.3	9.0	7.0
6.5	8.7	8.9	8.9	8.5	7.0
7.0		7.9	7.9	7.85	6.8
8.0		6.15	6.15	6.15	6.15
9.0		5.0	5.0	5.05	5.05
10.0		4.15	4.2	4.2	4.2
11.0		3.5	3.55	3.55	3.55
12.0		3.0	3.0	3.05	3.05
13.0				2.65	2.65
14.0				2.3	2.3
15.0				2.0	2.0
16.0				1.75	1.75
17.0				1.55	1.4
18.0				1.35	1.2
19.0					1.0
20.0					0.85
22.0					0.6
24.0					0.4

Outriggers minimum extended		Unit:ton			
		8.5m	14.4m	20.3m	26.2m
A	B (m)				
2.5	20.0	12.0	12.0	9.0	
3.0	20.0	12.0	12.0	9.0	
3.5	18.9	12.0	12.0	9.0	7.0
4.0	14.2	12.0	12.0	9.0	7.0
4.5	11.3	11.5	11.5	9.0	7.0
5.0	9.3	9.5	9.5	9.0	7.0
5.5	7.9	8.0	8.1	8.1	7.0
6.0	6.8	6.9	6.95	6.95	6.95
6.5	5.9	6.0	6.05	6.05	6.05
7.0		5.3	5.3	5.35	5.35
8.0		4.2	4.25	4.25	4.25
9.0		3.4	3.45	3.45	3.45
10.0		2.8	2.8	2.85	2.85
11.0		2.35	2.35	2.4	2.4
12.0		2.0	2.0	2.0	2.05
13.0				1.7	1.7
14.0				1.4	1.35
15.0				1.1	1.1
16.0				0.9	0.9
17.0				0.75	0.75
18.0				0.6	0.6
19.0					0.45

A = Boom length
 B = Working radius

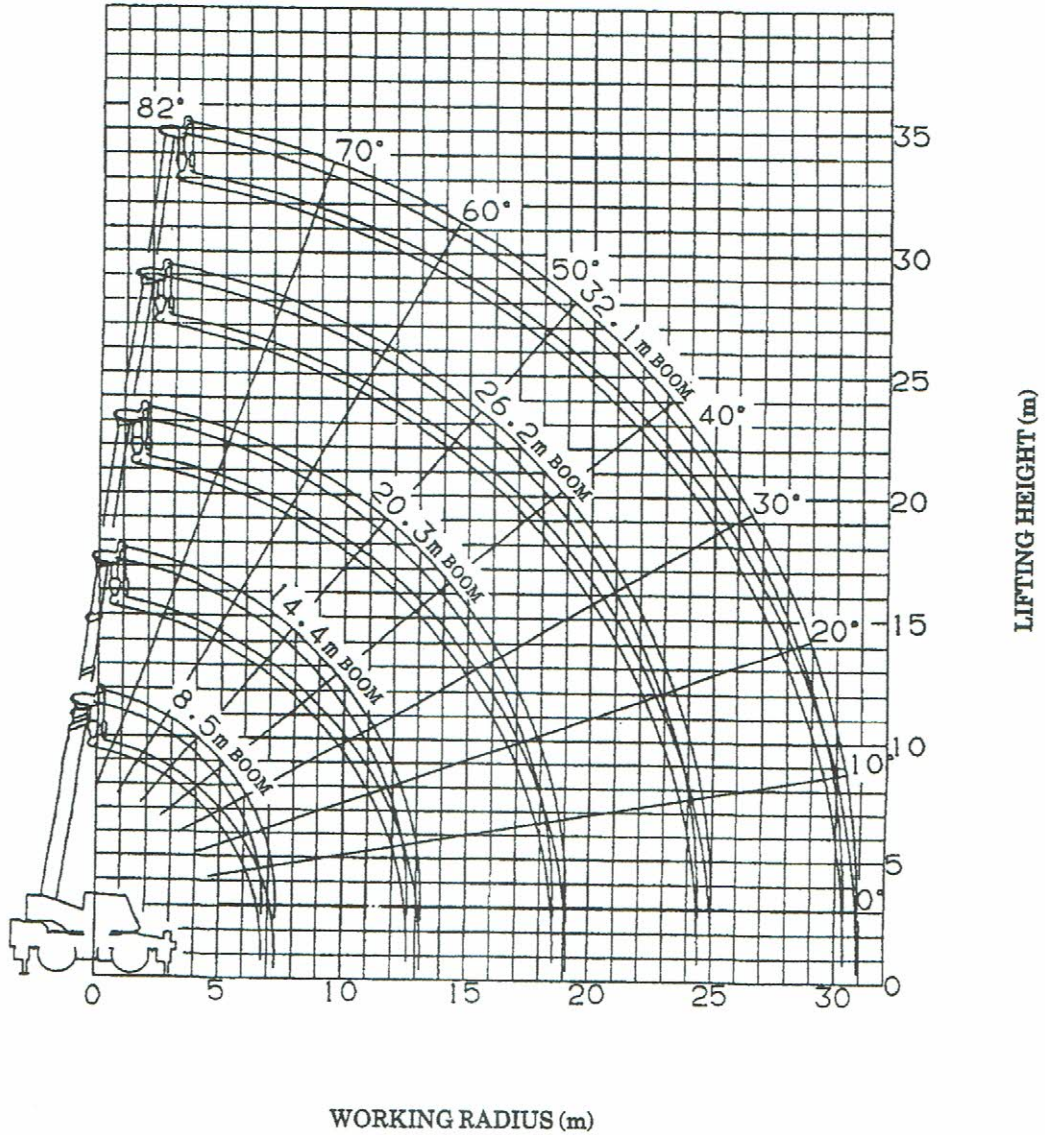
(ii) 5 section boom condition

Unit: ton

Outriggers fully extended						Outriggers middle extended						Outriggers minimum extended									
A	B (m)	8.5m	14.4m	20.3m	26.2m	32.1m	A	B (m)	8.5m	14.4m	20.3m	26.2m	32.1m	A	B (m)	8.5m	14.4m	20.3m	26.2m	32.1m	
2.5		4.8	4.8	4.8			2.5	4.8	4.8	4.8				2.5	4.8	4.8	4.8	4.8			
3.0		4.8	4.8	4.8			3.0	4.8	4.8	4.8				3.0	4.8	4.8	4.8	4.8			
3.5		4.8	4.8	4.8	4.8		3.5	4.8	4.8	4.8	4.8			3.5	4.8	4.8	4.8	4.8	4.8		
4.0		4.8	4.8	4.8	4.8	3.4	4.0	4.8	4.8	4.8	4.8	4.8	3.4	4.0	4.8	4.8	4.8	4.8	4.8	4.8	3.4
4.5		4.8	4.8	4.8	4.8	3.4	4.5	4.8	4.8	4.8	4.8	4.8	3.4	4.5	4.8	4.8	4.8	4.8	4.8	4.8	3.4
5.0		4.8	4.8	4.8	4.8	3.4	5.0	4.8	4.8	4.8	4.8	4.8	3.4	5.0	4.8	4.8	4.8	4.8	4.8	4.8	3.4
5.5		4.8	4.8	4.8	4.8	3.4	5.5	4.8	4.8	4.8	4.8	4.8	3.4	5.5	4.8	4.8	4.8	4.8	4.8	4.8	3.4
6.0		4.8	4.8	4.8	4.8	3.4	6.0	4.8	4.8	4.8	4.8	4.8	3.4	6.0	4.8	4.8	4.8	4.8	4.8	4.8	3.4
6.5		4.8	4.8	4.8	4.8	3.4	6.5	4.8	4.8	4.8	4.8	4.8	3.4	6.5	4.8	4.8	4.8	4.8	4.8	4.8	3.4
7.0			4.8	4.8	4.8	3.4	7.0		4.8	4.8	4.8	4.8	3.4	7.0		4.8	4.8	4.8	4.8	4.8	3.4
8.0			4.8	4.8	4.7	3.4	8.0		4.8	4.8	4.8	4.7	3.4	8.0		4.3	4.5	4.5	4.5	4.5	3.4
9.0			4.8	4.8	4.3	3.4	9.0		4.8	4.8	4.8	4.3	3.4	9.0		3.55	3.7	3.7	3.7	3.7	3.4
10.0			4.8	4.8	4.0	3.4	10.0		4.3	4.45	4.0	4.0	3.4	10.0		2.95	3.05	3.1	3.1	3.1	3.1
11.0			4.8	4.5	3.8	3.2	11.0		3.65	3.8	3.6	3.6	3.0	11.0		2.5	2.6	2.6	2.6	2.6	2.6
12.0			4.3	4.3	3.5	3.0	12.0		3.15	3.25	3.1	3.1	2.8	12.0		2.1	2.2	2.2	2.2	2.2	2.2
13.0				3.85	3.2	2.85	13.0			2.85	2.7	2.7	2.5	13.0			1.9	1.9	1.9	1.9	1.9
14.0				3.4	3.0	2.7	14.0			2.5	2.5	2.5	2.3	14.0			1.65	1.7	1.7	1.7	1.7
15.0				3.0	2.85	2.5	15.0			2.2	2.2	2.2	2.1	15.0			1.45	1.5	1.5	1.5	1.5
16.0				2.7	2.65	2.4	16.0			1.95	1.95	1.95	1.9	16.0			1.1	1.1	1.1	1.1	1.1
17.0				2.4	2.4	2.3	17.0			1.7	1.7	1.7	1.7	17.0			1.0	1.0	1.0	1.0	1.0
18.0				2.2	2.2	2.15	18.0			1.55	1.55	1.55	1.55	18.0			0.8	0.8	0.8	0.8	0.8
19.0					2.0	2.0	19.0				1.3	1.3	1.3	19.0							
20.0					1.8	1.8	20.0				1.1	1.1	1.1	20.0							
22.0					1.5	1.5	22.0				0.9	0.9	0.9	22.0							
24.0					1.1	1.1	24.0				0.6	0.6	0.6	24.0							
26.0						0.9	26.0						0.4	26.0							
28.0						0.7															
30.0						0.5															

A = Boom length
B = Working radius

WORKING RADIUS - LIFTING HEIGHT



NOTES:

1. The deflection of the boom is not incorporated in the figure above.
2. The figure above is for the case when the outriggers are fully extended (360°).

DIMENSIONS (1/100)

