

20m

18m

16m

14m

12m

10m

8m

6m

SPECIFICATIONS FOR 18 TONNE MODEL

RATED CAPACITY

18 Tonnes at 1.26m radius
16 Tonne at 2.01m radius
1.50 Tonne at 15.80m radius
Hook Height 16.75 metres
Lift Hook block 12.6 tonnes
Single Line 4.2 tonnes

AXLE LOADINGS

Front Axle 8000kg
Rear Axle 11000kg
TOTAL 19000kg

TURNING CIRCLE

Outside
Wheels 7.4 metres

DIMENSIONS

Overall Length
9.67 metres
Overall Width 2.50 metres
Overall Height
3.07 metres

HYDRAULIC WINCH

Line pull with full drum 4.2T
3/2 part fall block or single line, full hook compensation.

CABIN

ROPS type insulated lock up cabin.

ENGINE

Hino H07C-T 6 Cylinder
Turbo Charged
162 kW (217 HP) at 2800 rpm
647 Nm (477 ft.lbf) at 1700 rpm.

TRANSMISSION

Allison MT643
4 Speed fully automatic with lockup available in 3rd/4th whilst driving and 1st-4th in conjunction with the exhaust brake.

TRANSFER CASE

Two (2) speed AIR SHIFT with AIR SHIFT disconnect to REAR wheels.

HYDRAULIC TANK

Capacity 255 litres.

FUEL TANK

Capacity
290 litres.

DRIVE AXLES

Front and rear heavy duty drive axles. Driver engaged air diff lock on front axle.

DRIVE SHAFTS

Spicer Series 1610.

BRAKES

Full air S cam Twin Circuit Brakes front and rear axles. Spring applied on rear axle, Crane operation hold brake on front wheel. Engine exhaust brake.

TYRES

1200 x 20 x 20 PR Duals.

STEERING

Full Power ORBITROL with twin Hydraulic double acting rams. Priority flow from main pump supply plus electro hydraulic emergency supply.

HYDRAULIC PUMP

Load sensing axial piston
126 litre/min.

SUSPENSION

Two (2) Semi elliptic springs on each axle plus TORSION BAR on front axle for stability.

PERFORMANCE

Maximum – 85kph
Gradability – 50%

OPTIONAL EQUIPMENT

- Air Conditioning
- Machinery Hook (10 tonne SWL)
- Spare wheel carrier
- Central greasing
- Fly Jib (2.9m)
- Man Basket
- Spreader Bar
- Six speed synchromesh manual transmission
- Others on application

Specifications subject to change without notice.

PATENTED DESIGN

FRANNA CRANES

FRANNA CRANES PTY. LTD. A.C.N. 010 671 048

570 Curtin Avenue Eagle Farm Brisbane Qld 4009 Australia

Telephone: +61 7 3268 7422 Facsimile: +61 7 3268 2489

ALL TERRAIN LIFT & CARRY MOBILE CRANE

Quality Systems
Quality Endorsed Company
ISO 9001:1994



AT-18

FRANNA CRANES



The FRANNA AT-18 is the latest addition in the successful Franna range of all terrain mobile cranes. This machine incorporates many new features which enhance safety, driver ergonomics and improve machine operations.

Built for comfort as well as hard work the cabin offers a spacious interior, a binnacle type dashboard, pilot operated hydraulics and a digital load indicator. Both the hydraulic oil and fuel tank have been integrated around the six cylinder engine in the rear body, with the latest design in adjustable wear pads and boom structure up front.

With this machine you have the power, finesse and versatility to lift almost anything anywhere. Here are some of the many features.

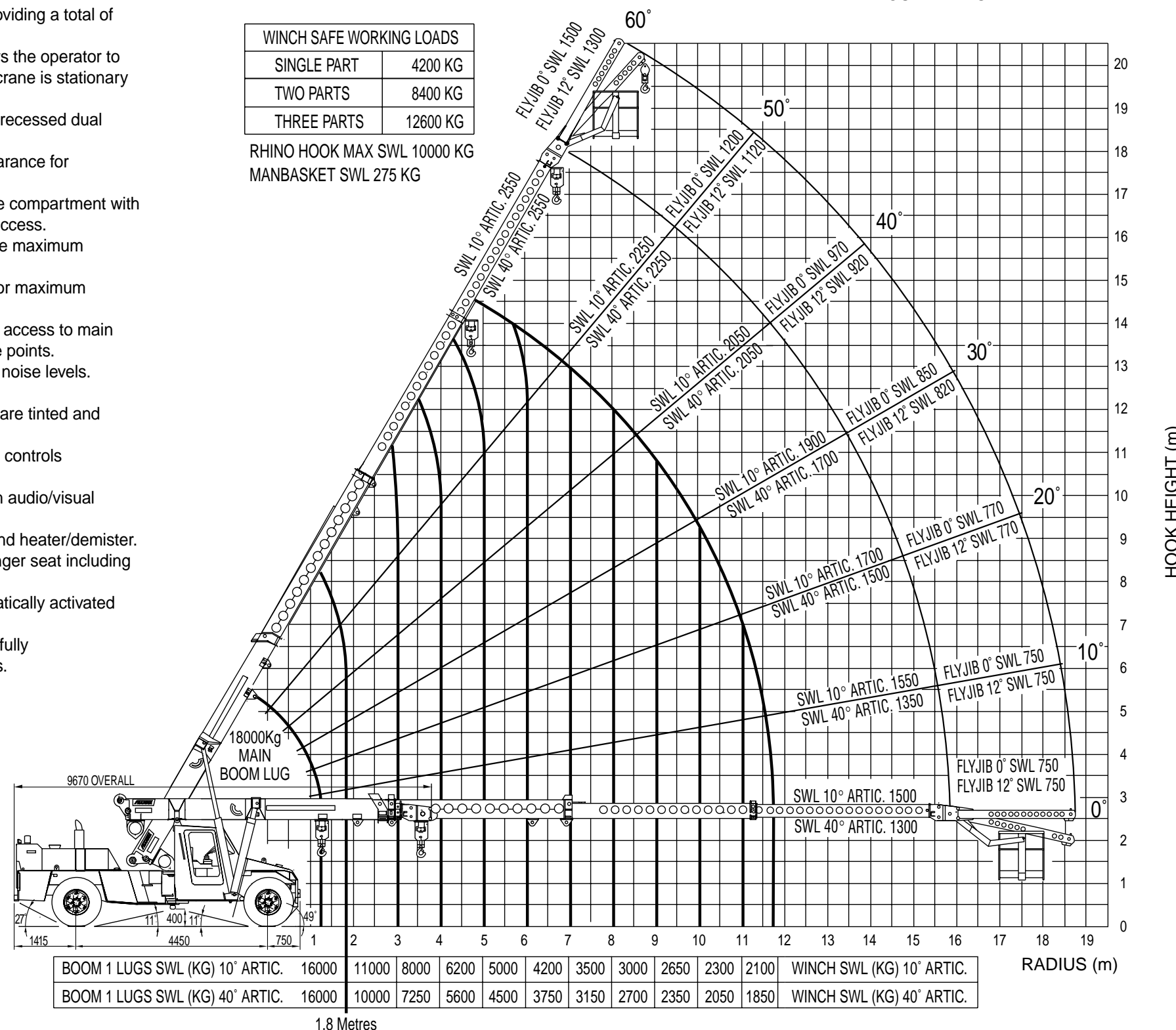
- Hydraulic winch with full hook compensation.
- Synchronised power boom ²/₃ part hook block.
- 40° articulation each side of centre providing a total of 80° of slewing arc.
- Exclusive hold brake attachment allows the operator to slew the crane through 80° whilst the crane is stationary and the holding brake is activated.
- 32mm thick steel front plate, with fully recessed dual headlights and blinkers.
- Boom head design with maximum clearance for machinery installation.
- 800 litre front mounted sling and tackle compartment with opening front and top doors for easy access.
- Wide stance boom lift cylinders provide maximum operator's vision.
- Total engine cover hinged rearwards for maximum access to engine and service points.
- Front bonnet cover hinged to allow full access to main hydraulics, pilot hydraulics and service points.
- Upswept exhaust muffler for minimum noise levels.
- Large, zone tinted front windscreen.
- Roof, rear and quarter glass windows are tinted and allow greater visibility.
- Full binnacle type instrumentation and controls positioned for ease of operation.
- Robway 1502 Safe Load Indicator with audio/visual overload pre-warning.
- 2 speed windscreen wipers, washer and heater/demister.
- Suspension driver's seat, fixed passenger seat including seat belts.
- Full power orbital steering with automatically activated DC emergency steering.
- Heavy duty front and rear bodies with fully incorporated checker plate mudguards.
- Work lights front and rear.
- Amber rotating light to rear bonnet.



MELBOURNE F1 GRAND PRIX.

WINCH SAFE WORKING LOADS	
SINGLE PART	4200 KG
TWO PARTS	8400 KG
THREE PARTS	12600 KG

RHINO HOOK MAX SWL 10000 KG
MANBASKET SWL 275 KG



NOTE: 1. UNLESS OTHERWISE STATED ALL SWL'S REFER TO LIFTING ON THE WINCH, FOR LIFTING LUG CAPACITIES PLEASE REFER TO THE SPECIFIC LOADCHART.

2. THIS RADIUS CHART IS A SUMMARY OF LOADCHART 16C1204-, REFER TO THE CRANE'S LOADCHART BEFORE ATTEMPTING A LIFT.



FRANNA CRANES LTD

LOAD CHART 16C1204A MODEL AT-18

S.W.L. IN KILOGRAMS FOR SLEW ANGLES OF 10° OR LESS EITHER SIDE OF STRAIGHT AHEAD (INDICATED BY GREEN LED ON DASH).
S.W.L. IN KILOGRAMS FOR SLEW ANGLES OF GREATER THAN 10° EITHER SIDE OF STRAIGHT AHEAD (INDICATED BY YELLOW LED ON DASH).



RADIUS IN METRES.



S.W.L. ARE BASED ON 66.7% STABILITY & STRENGTH.
- S.W.L. ABOVE BOLD RED LINE ARE STRUCTURAL.
- S.W.L. ON 18T LUG ARE STRUCTURAL.

S.W.L. ARE BASED ON FIRM LEVEL GROUND (1% SLOPE (0.6 DEG) AS PER AS1418.5) WITH TYRES INFLATED AS PER THIS CHART. WEIGHT OF HOOKS, BLOCKS, SLINGS & OTHER LOAD HANDLING DEVICES SHALL BE ADDED TO THE WEIGHT OF THE LOAD. LIFT & CARRY - THE S.W.L. SHALL BE CARRIED WITH THE MINIMUM BOOM LENGTH & AS CLOSE TO THE GROUND AS POSSIBLE AT SPEEDS NOT IN EXCESS OF 0.4 m/sec (1.44km/hr).

HOIST ROPE

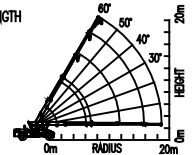
DIAMETER : Nominal 14mm.
CONST : 35Wx7NR COMPACT MIN. BREAKING LOAD : 165 kN.
MACHINE SPLICE & THIMBLE EYE, ONE END ONLY, LENGTH : 65m.

BOOM HEAD MOUNTED RHINO HOOK

MAXIMUM S.W.L. ABOVE BOLD BLACK LINE IS 10000 KG WHICH IS STRUCTURAL.
S.W.L. BELOW BOLD BLACK LINE AS PER CHART WITH LENGTH AS READ ON BOOM LENGTH INDICATOR + 0.50 METRE.

TYRES

FRONT : 12.00x20x20 PLY INFLATED TO 125 PSI (DUAL)
REAR : 12.00x20x20 PLY INFLATED TO 90 PSI (DUAL)



WARNING

DO NOT LEAVE KEY "ON"
EMERGENCY STEERING
WILL ACTIVATE.

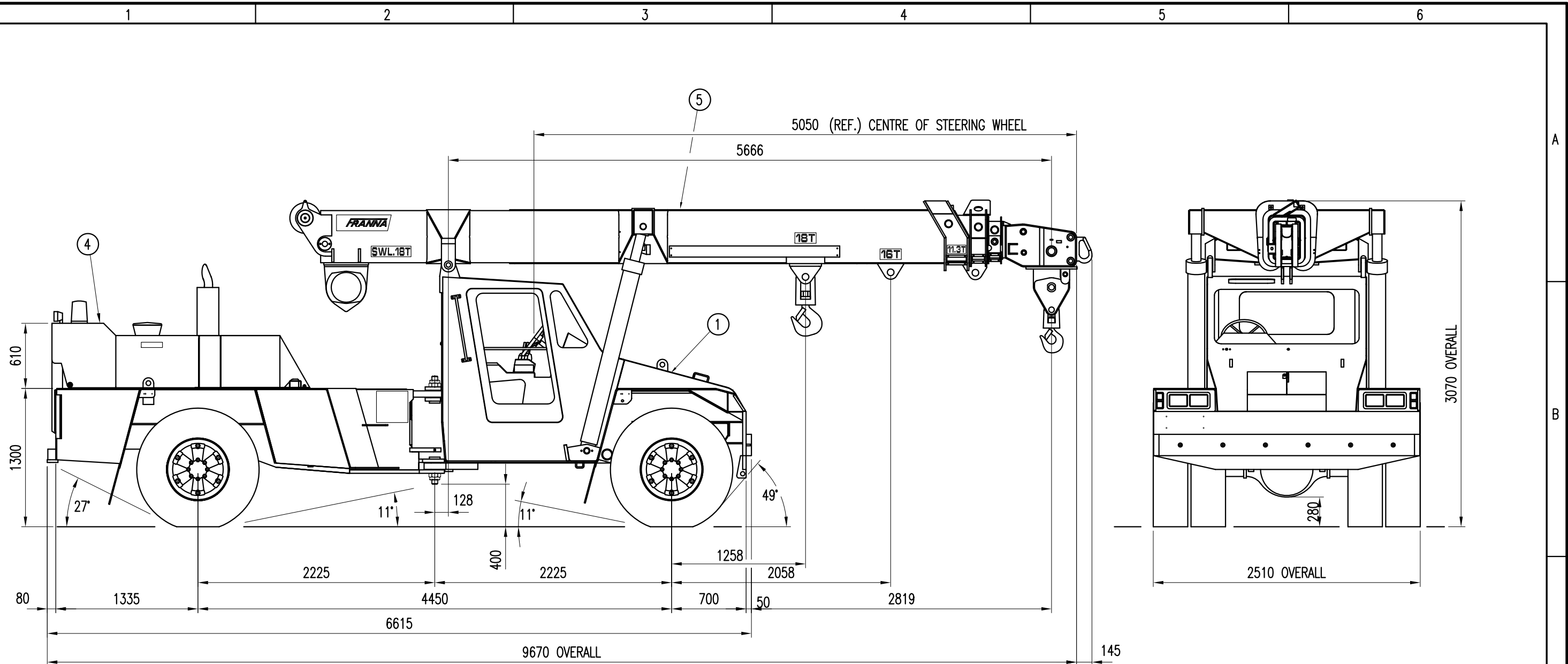
WINCH SAFE WORKING LOADS

SINGLE PART	4200 KG
TWO PARTS	8400 KG
THREE PARTS	12600 KG

BOOM ANGLE	BOOM PIVOT TO HEAD SHEAVES - MANUAL EXTENSION RETRACTED.																		MAN. EXT.	FLY JIB			
	5.67	6.00	6.50	7.00	7.50	8.00	8.50	9.00	9.50	10.00	10.50	11.00	11.50	12.00	12.50	13.00	13.50	13.85		0°	12.5°		
60°																			17.90	20.83	20.76		
50°																			22.50	12.00	11.20		
40°																			11.53	13.79	14.13		
30°																			8.80	8.50	8.20		
20°																			7.70	7.70	7.70		
10°																			7.50	7.50	7.50		
0°																			18.73	18.69	18.69		

BOOM ANGLE	18T LUG	BOOM PIVOT TO INNER LUG, 1st EXTENSION MANUAL EXTENSION RETRACTED.																											
		4.16	4.50	5.00	5.50	6.00	6.50	7.00	7.50	8.00	8.25	1.17	1.49	1.81	2.14	2.46	2.78	3.10	3.26										
60°	3.36																			1.22	1.47	1.72	1.97	2.09					
50°																				1.17	1.49	1.81	2.14	2.46	2.78	3.10	3.26		
40°																				1.13	1.40	1.78	2.16	2.55	2.93	3.31	3.69	4.08	4.27
30°	0.86																			1.54	1.84	2.27	2.70	3.14	3.57	4.00	4.43	4.87	5.08
20°	1.09																			1.83	2.16	2.63	3.10	3.67	4.04	4.61	4.98	5.46	5.68
10°	1.23																			2.01	2.35	2.84	3.33	3.82	4.32	4.81	5.30	5.79	6.04
0°	1.26																			2.06	2.40	2.90	3.40	3.90	4.40	4.90	5.40	5.90	6.16

BOOM ANGLE	OUTER LUG, 1st EXTENSION, MANUAL EXT. RETRACTED																			
	READ OFF INNER LUG INDICATOR SCALE (RED)																			
BOOM ANGLE	4.16	4.50	5.00	5.50	6.00	6.50	7.00	7.50	8.00	8.25	1.12	1.37	1.62	1.87	2.12	2.37	2.49			
60°											1.12	1.37	1.62	1.87	2.12	2.37	2.49			
50°											1.14	1.37	1.69	2.01	2.33	2.65	2.97	3.30	3.62	3.77
40°											1.74	2.01	2.39	2.78	3.16	3.54	3.93	4.31	4.69	4.88
30°											2.23	2.53	2.96	3.40	3.83	4.26	4.70	5.13	5.56	5.77
20°											2.58	2.91	3.38	3.85	4.32	4.79	5.26	5.73	6.20	6.43
10°											2.79	3.14	3.63	4.12	4.61	5.11	5.60	6.09	6.58	6.82
0°											2.85	3.20	3.70	4.20	4.70	5.20	5.70	6.20	6.70	6.95



ESTIMATED TARE

FRONT : 8000 kg
 REAR : 11000 kg
 TOTAL : 19000 kg

TURNING RADIUS : 7400mm

KITS NOT ILLUSTRATED

- 2
- 3
- 6
- 7

OPTIONS

MAN BASKET (LARGE)	PLA2038	SUPER SINGLE WHEELS	PL16A1071
SPARE WHEEL CARRIER	PL16A2044	SPREADER BARS	PL16A1043
FLY JIB	PL16A3019	SPREADER BARS (BUMPER)	PL16A1077

						UNLESS OTHERWISE STATED ALL WELDING TO AS1554 CATEGORY SP AND ALL DIMENSIONS IN (mm) & TOLERENCED TO LIMITS SHOWN.				AS 1100 DO NOT SCALE		DATE	31-10-96				
						NOMINAL SIZE	UP TO 150	ABOVE 150 UP TO 300	ABOVE 300 UP TO 1000	ABOVE 1000	DRN		T.G.H.				
A						KIT STRUCTURE REVISED	D797	TGH	YES	24-01-97	CKD						
REV						CHANGE DETAILS	CHG No.	BY	INTER	DATE	SCALE 1:38		APPD				
						TEREX FRANNA A.B.N. 86 010 671 048				Title		8 TONNE CRANE WITH HO6C-TE & MT643 TRANSMISSION		DRG No.	16-A-1-100	REV	A
										PRODUCT No. :		16A1100A					